

MIL. SPEC SWAGE EYE

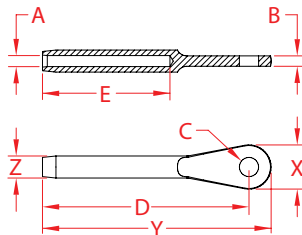
STAINLESS STEEL



Made in
USA



Precision
Machined



ITEM	A (wire)	B	C	D	E	BEFORE (swage)	AFTER (swage)	X (height)	Y (length)	Z (width)	WT (lb)	PACKAGING TYPE	EACH (qty)	INNER (qty)	CARTON (qty)	UPC
MS20668-2	1/16"	0.09"	0.19"	1.63"	1.04"	0.16"	0.14"	0.36"	1.84"	0.16"	0.01	POLYBAG	1	10	200	791506019367
MS20668-3	3/32"	0.10"	0.19"	2.04"	1.26"	0.22"	0.19"	0.44"	2.29"	0.22"	0.02	POLYBAG	1	5	200	791506019374
MS20668-4	1/8"	0.19"	0.19"	2.34"	1.51"	0.25"	0.22"	0.50"	2.62"	0.25"	0.03	POLYBAG	1	5	200	791506019381
MS20668-5	5/32"	0.20"	0.25"	2.68"	1.76"	0.30"	0.25"	0.64"	3.04"	0.30"	0.05	POLYBAG	1	5	200	791506019398
MS20668-6	3/16"	0.26"	0.31"	3.02"	2.01"	0.36"	0.31"	0.78"	3.46"	0.36"	0.08	POLYBAG	1	5	100	791506019404
MS20668-8	1/4"	0.31"	0.38"	3.76"	2.51"	0.49"	0.44"	0.97"	4.30"	0.49"	0.19	POLYBAG	1	5	100	791506019411
MS20668-10	5/16"	0.34"	0.44"	4.55"	3.01"	0.64"	0.56"	1.22"	5.22"	0.64"	0.37	POLYBAG	1	1	20	791506019343
MS20668-12	3/8"	0.38"	0.50"	5.56"	3.51"	0.70"	0.63"	1.50"	6.38"	0.70"	0.55	POLYBAG	1	1	20	791506019350

NOTE:
THESE FITTINGS MEET MIL SPEC #MS20668 AND HAVE MET ALL QUALITY AND TESTING REQUIREMENTS PER MIL-DTL-781 AND ARE APPROVED FOR LISTING IN QPL-781. MACHINE SWAGE ONLY.
ALL DIMENSIONS ARE NOMINAL (+/- 3%) AND ARE SUBJECT TO CHANGE WITHOUT NOTICE.